

Case Study :

Creating distributed web application based on Typo3 Framework.
A Business and personal interactive mapping software.

The Netherlands - New Delhi, India. Year 2008



Author: Vikram Mandal
FiveE Technologies, New Delhi, India
email : vikram@fivee.in



Head Office:
Jaina tower-I, Janakpuri DC,
New Delhi, India

Web Application Development services provider

*FiveE is an integrated and a pioneering one-stop
Typo3 consultant based in India*

Copy right @ 2008

<http://typo3india.com> <http://fivee.in> <http://typo3india.org>

Technologies Simplified - FiveE Technologies.

Company Background

The end client provides an innovative way of self exploration and streamlining objectives of people using fantasy maps of real life events – the process universally called “Business Mapping” or “Personal Mapping”. Business Mapping provides process improvement consulting and training solutions - a process mapping methodology. It helps create a beginning, milestones, a route to achieve the objectives. The solution provides an alternative way of speaking a persons mind and thus acting as a discussion making support system.

Challenges

Business process mapping is used in various organizations at various level of employee hierarchy and expertise. Business mappings are custom solution applied to specific person or groups. Given such varied approach made building such software a greater challenge for FiveE Technologies.

Key Requirement

- Administrator will upload fantasy or real maps of any size.
- Administrator can write strings on the image of the map of various size, fonts, and styles like as wave or curve or straight line
- Dynamically define questions with options
- all the options i.e. answers to questions can be map to specific location in the map and a output can be defined
- The output against the answers are to show up on the maps as the users answer the questions
- The output again can be styles in various size, font, and styles like as wave or curve or string line
- each map can be saved and any time later high quality print can be generated
- System to be should be able to take load of 200 users at any point of time.

References

- Microsoft
- ABN-AMRO
- SHELL
- Phillips
- Siemens
- KML

“the output against the answers are to be generated on the maps in various size, fonts, and styles like as wave or curve or straight line”



“System to be should be able to take load of 200 users at any point of time”

Requirement – Licensing and distribution

- the maps are to be created by super administrators and distributed to clients based on given license
- the maps are to be made working in client side where user at the client side will take up the map questionnaire and the interactive maps will be generated
- Maps are created on one server (first level) by super administrators and made available on multiple client servers (second level) on which client administrators make the maps available in the frontend to website visitors (third level).
- A fourth level exist which will works as print houses for high quality map printing.

Approach

We at FiveE believe in simplicity.

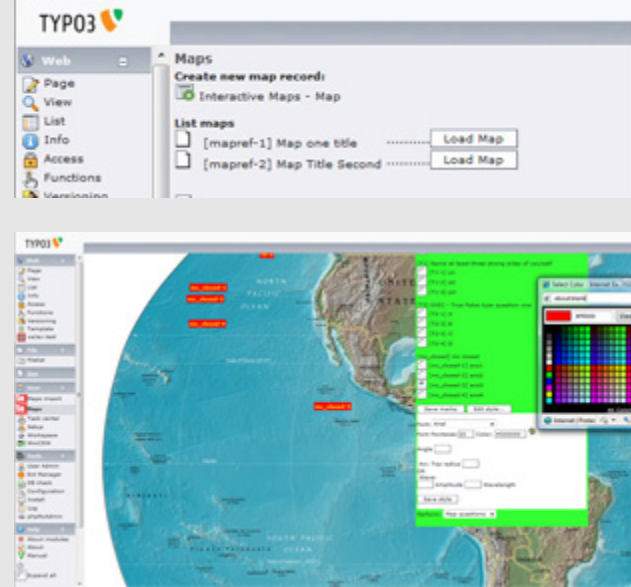
After looking at few of the available software, including software used to track Indian railway locomotives using GPRS technology, it seemed that they could be made much simply instead of building them on heavy software like Java applets or advance Flash coding. We chose to go for light weight HTML, Javascript, Ajax based solution and used open source JS libraries to add usability to the system like drag and drop etc.

In initial stages we considered integrating with Alfresco – An open source Java based ECM, PHP PDO among other considerations and futuristic thoughts including but not limited to combining multiple servers for faster handle image processing.

The first priority was to build a stable system and hence had to be a well tested technology. We settled done to Typo3 Framework, PHP SOAP, Ajax, Imagemagick for image processing, and Java based desktop application to generate high resolution images for printing.

Development setup were created on dedicated servers, VPN, SSL. And after six months of hard work and dedication we achieved what was expected from us and the system was accepted.

Screens of Maps creation by Super Administrator



High quality printing using Java desktop application

